

NetVault: Backup

FAST FACTS

- Full VMware Protection*
- Advanced SAN/NAS Support*
- Comprehensive NDMP Support*
- Clustered Application Support*
- Command Line Interface (CLI)*
- Comprehensive Media Management*
- Direct Access Restore*
- Disaster Recovery*
- Disk-to-Disk Backup*
- Dynamic Device Sharing*
- Event Notification*
- Extensive Platform Support*
- GbE Device Support*
- High Performance Data Movers*
- Media Data Copy*
- Network Compression*
- Load Balancing*
- Open File Protection*

Advanced Data Protection Solutions for Storage Networks

From the experts in open systems data recovery, BakBone Software's NetVault: Backup delivers enhanced data protection and enterprise-class functionality that scales to meet the demands of any sized environment. NetVault: Backup's flexible, modular architecture delivers proven reliability and high performance, with a unique combination of features designed to meet current and future data protection needs. Whether you are managing a few servers or a multi-site networked storage environment, there is a NetVault package designed to fit your needs.

KEY BENEFITS

Increased Automation

NetVault: Backup's event notification enhancements and policy based job management features are designed to provide increased automation, especially when deployed across heterogeneous storage networks. NetVault: Backup enables administrators to define, manage and monitor jobs from remote clients, while the flexible notification feature ensures business continuance with the ability to define event contexts and triggers, tailoring Net Vault to meet your unique requirements.

Enhanced Administrator Productivity

Policy based job management and NetVault's enhanced reporting capabilities simplify maintenance of your data protection strategies. Many activities such as job definition and event notification can be defined and modified at a group level, making administrative tasks quicker and easier.

Rapid Deployment

NetVault's automated installation and device configuration features make it easy to add, manage or re-deploy distributed data management components throughout an ever growing enterprise storage environment. With our modular architecture you can license only those components you need today, while easily expanding the system as your storage environment or performance requirements grow.

Lower Total Cost of Ownership

By dramatically simplifying implementation and networked storage administration, NetVault: Backup ensures improved data availability while reducing associated labor costs. NetVault: Backup can significantly lower your TCO and provide a return on your initial software investment in as little as six to nine months.

MAJOR FEATURES

Policy Based Job Management

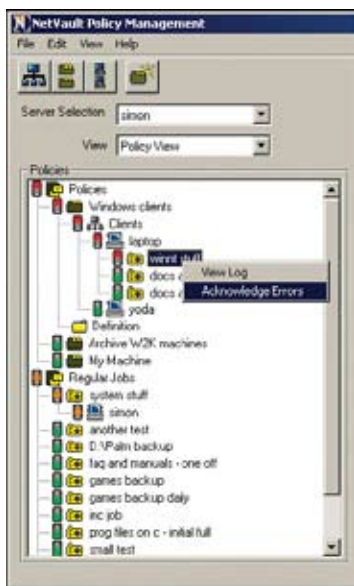
Comprehensive job management tools help storage administrators create data protection policies that efficiently define and manage backup strategies for all of your clients and critical applications. The Policy Management tools allow job templates to be created and easily applied to a single client or an entire group of clients, simultaneously. Once defined, policy-based administration allows you to monitor, manage and edit a group of jobs as a single entity. This improves productivity and reduces the human error associated with manual job management.

User Level Access

To ease storage administration and increase security, the User Level Access feature allows users to be defined with a specific set of privileges on an individual or group basis. For example, you may grant the ability to run reports and define backup jobs to your database administrators, while limiting all other users to restoring only their clients' files. User Level Access is ideal for extending a subset of NetVault: Backup's features to other members of the IT staff as well as end users and helps free network administrators for more critical tasks.

Enhanced Reporting

The improved reporting feature allows the administrator to schedule reports on many aspects of NetVault: Backup's operation with several output types available, such as HTML or comma delimited. Reports can be viewed dynamically, printed and/or emailed upon completion. In addition, a powerful report editing tool has been provided to allow user defined reports to be created. Reports can be executed conditionally or on a scheduled basis.



NetVault Policy View showing color coded active policy status.

SUPPORTED DEVICES & LIBRARIES

Most existing tape libraries and tape formats, including the latest high speed technologies from ADIC, Breece Hill, Dell, Exabyte, HP, IBM, NEC, Overland Storage, Qualstar, Quantum, Seagate, SONY, Spectra Logic, Sun/StorageTek (including ACSLS) and Tandberg

SERVER PLATFORMS

Windows, Most Linux Platforms, Mac OS X, NCR MP-RAS, Solaris (SPARC & x86/x86-64)

CLIENT PLATFORMS

HP-UX, AIX, Novell NetWare

VIRTUALIZATION PLATFORMS

VMware VirtualCenter, VMware ESX

NDMP SUPPORTED NAS DEVICES

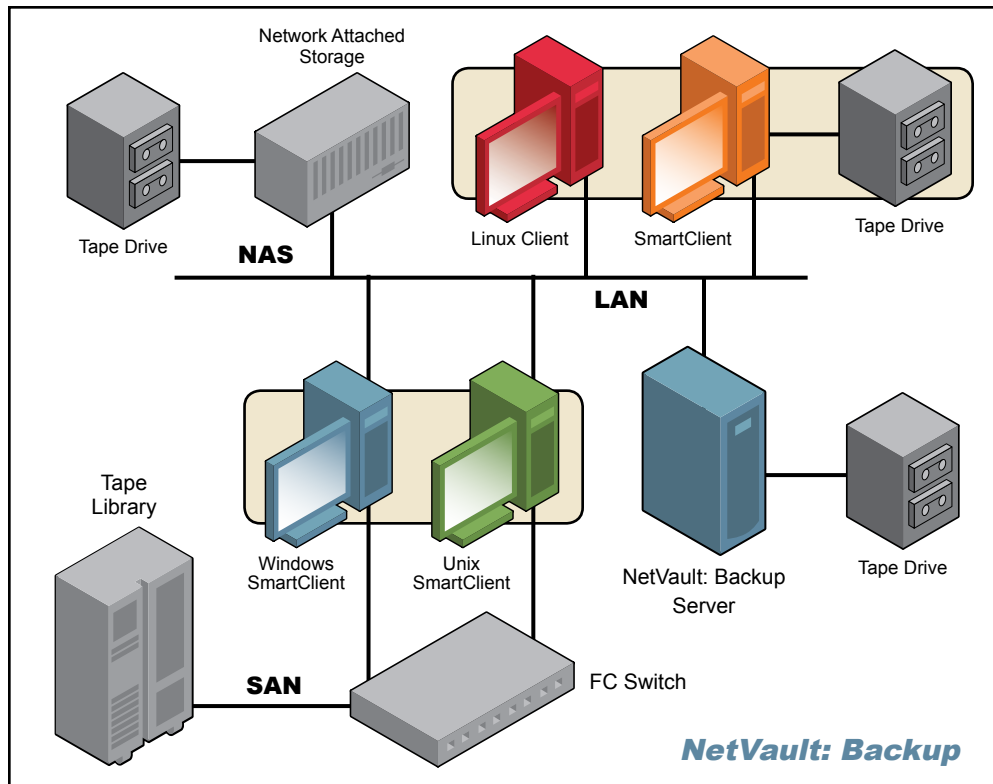
Adaptec, BlueArc, EMC, MiraPoint, Network Appliance, Sun

Specifications and system requirements subject to change without notice.

For updated information, please visit www.bakbone.com/backup.

©1999-2008 BakBone Software®, the BakBone logo®, Application Plugin Module®, and NetVault® are trademarks or registered trademarks of BakBone Software, Inc., in the United States and /or in other countries. All other brands, products or service names are or may be trademarks, registered trademarks or service marks of, and used to identify, products or services of their respective owners.

www.bakbone.com



SAN/NAS Support

NetVault: Backup helps you leverage your investment in today's advanced storage networking technology. Large capacity libraries and high speed tape devices are easily shared within a NetVault: Backup domain. You can share media and libraries between multiple nodes to distribute backup operations while increasing data throughput and reducing network load. NetVault automatically determines the best data path and handles shared device arbitration.

Cluster Configuration Support

For today's business critical IT environments, NetVault: Backup offers enhanced support for file systems and applications running in Windows, Solaris and Linux clustered environments. Single-screen configuration of NetVault: Backup cluster support allows the system administrator to identically install and configure the Application Plugin Module (APM™) for each node in the cluster, eliminating the complexity that may otherwise result in configuration errors. Specific information on cluster support is available at www.bakbone.com/products.

Comprehensive Application Support

NetVault: Backup has a full suite of APMs to provide online support for your critical business database and messaging applications. Installed on the client, the APM communicates with these applications using a backup interface that is consistent with each application. Each APM's interface automatically adds application specific components to your backup and restore selection criteria.

About BakBone

BakBone is committed to making data protection a simple, straightforward process while delivering its Integrated Data Protection (IDP) strategy through an award-winning product suite. Thousands of users worldwide leverage BakBone's IDP approach to simplify the management of multi-platform environments with a portfolio of backup, disaster recovery, replication and storage reporting solutions for Linux, Windows, Unix and Mac OS X environments. BakBone's products offer a single point of control for managing resources across all platforms, providing improved operational efficiency, reduced system downtime, improved availability and enhanced security to support the business growth of enterprise environments. BakBone is headquartered in San Diego, Calif. For more information about BakBone, visit www.bakbone.com or email info@bakbone.com.